

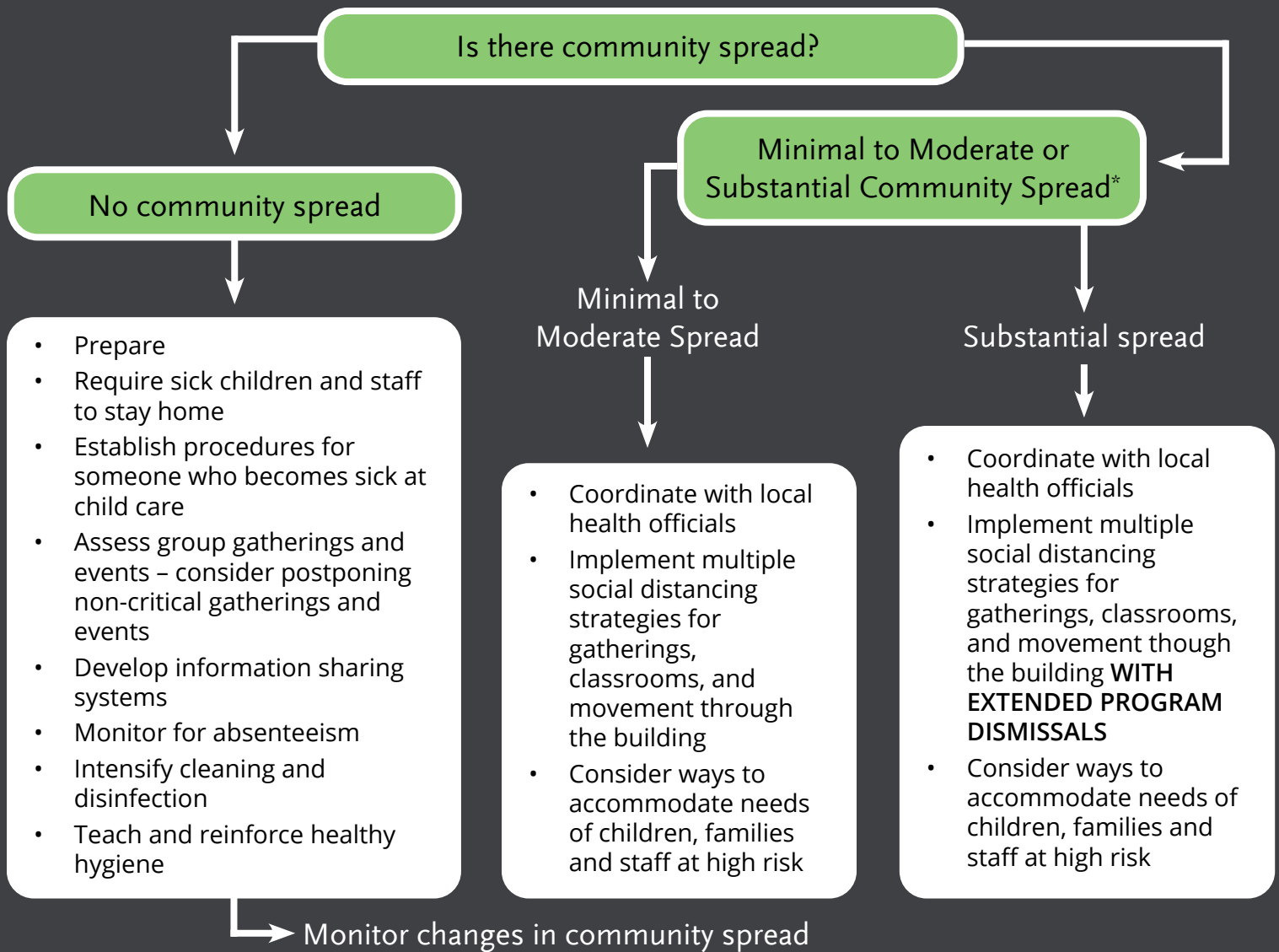
CONSIDERATIONS FOR CHILD CARE CLOSURE DUE TO COVID-19

The following has been adapted for child care providers from CDC Guidelines. Last updated 3/20/2020

Has your school district or state taken actions to close K-12 schools?

Child Care Aware® of America recommends that all child care programs should also close, with the exception of programs serving essential and emergency personnel (to be defined by the state or locality).

Note: CCAoA strongly urges the federal government to provide support and assistance for child care programs and providers, particularly those having to close.



All child care programs regardless of community spread

Confirmed person (staff or child) with COVID-19 in building?

Assess risk

Short (potential 2-5 day) program dismissal to clean/disinfect in consultation with local health officials

Understanding that each community is different, contact your CCR&R or visit www.childcareaware.org to learn more about your options.

*Minimal to moderate spread is widespread and/or sustained transmission with high likelihood or confirmed exposure within communal settings. Substantial community spread is large scale community transmission, with health care staffing significantly impacted, and multiple cases within communal settings.